



## **BEM5** **ELECTROMAGNET** **Holding Power ON**

This magnet exerts a holding force of approximately **55 Kgf** perpendicular to any steel plate (see accessories) with which it is in contact, assuming nominal voltage, and coil at working temperature rise of 60°C in an ambient of 20°C.

Voltage range **6 - 240 VDC**

Power consumption - **5 Watts**

Minimum steel plate thickness - **5mm**

(Note that a magnet has little resistance to a sliding force)

Temperature Class B (130°C)

Supply - **DC or full-wave rectified AC**

Protection rating - **IP40**

Finish - **Zinc Passivate**

Weight - **500g**

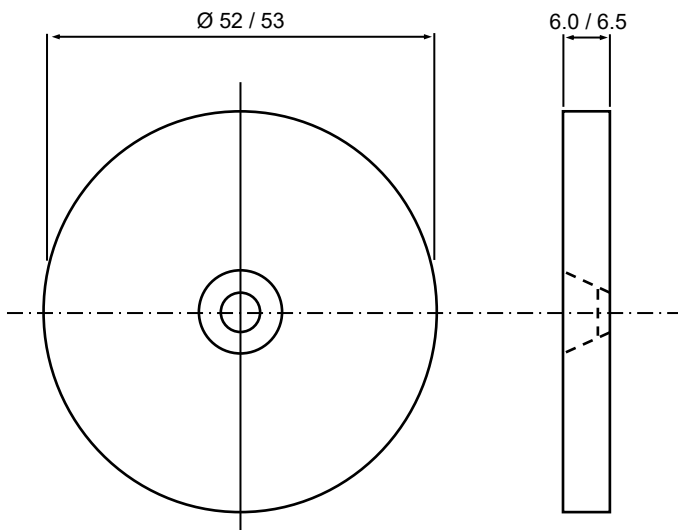
The low wattage and temperature rise give maximum reliability and minimum power consumption on the remote control latches, shutters, fire doors etc. to which this magnet is frequently applied.

### Ordering Code -

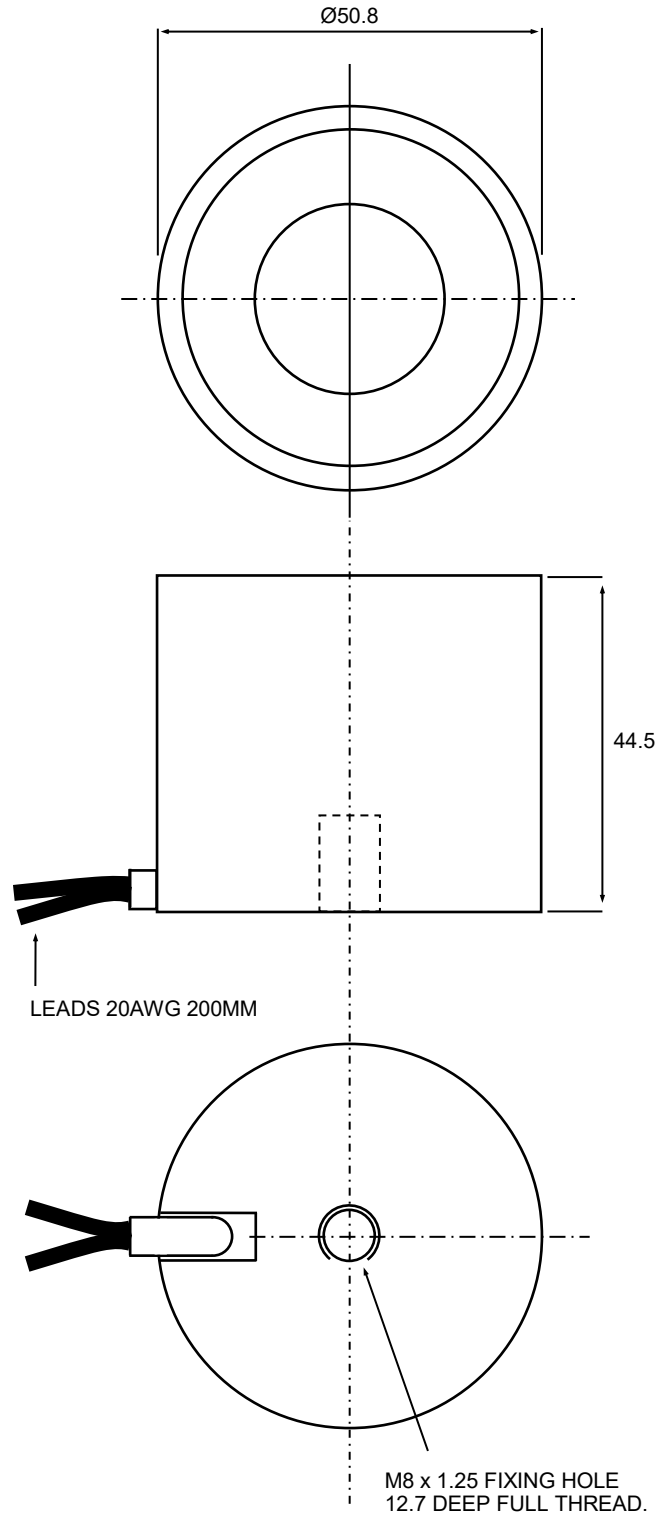
BEM5 / 04 / 12V / 5W

BEM5 / 02 / 24V / 5W

### Accessory Option Catch Plate 2693



Fix with M5 countersink screw, (not supplied).



DIMENSIONS IN MM

*We reserve the right to alter or amend designs without prior notice.*

**ELEKTROKOMponentER AB**

Karl Johansvagen 75, 725 91 Vasteras Sweden

BEM5 Rev 6 - 2019